

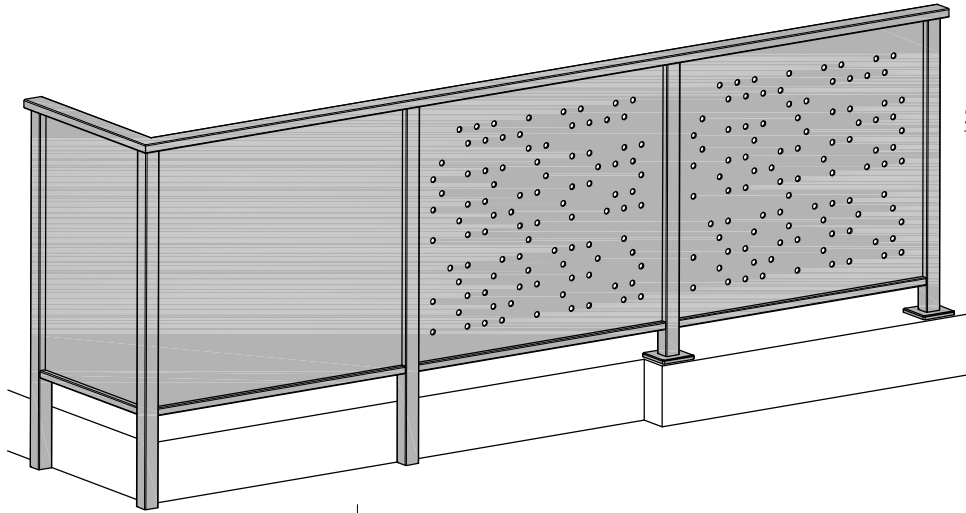


 **spectrum**  
**Clearspan Ali Sheet**

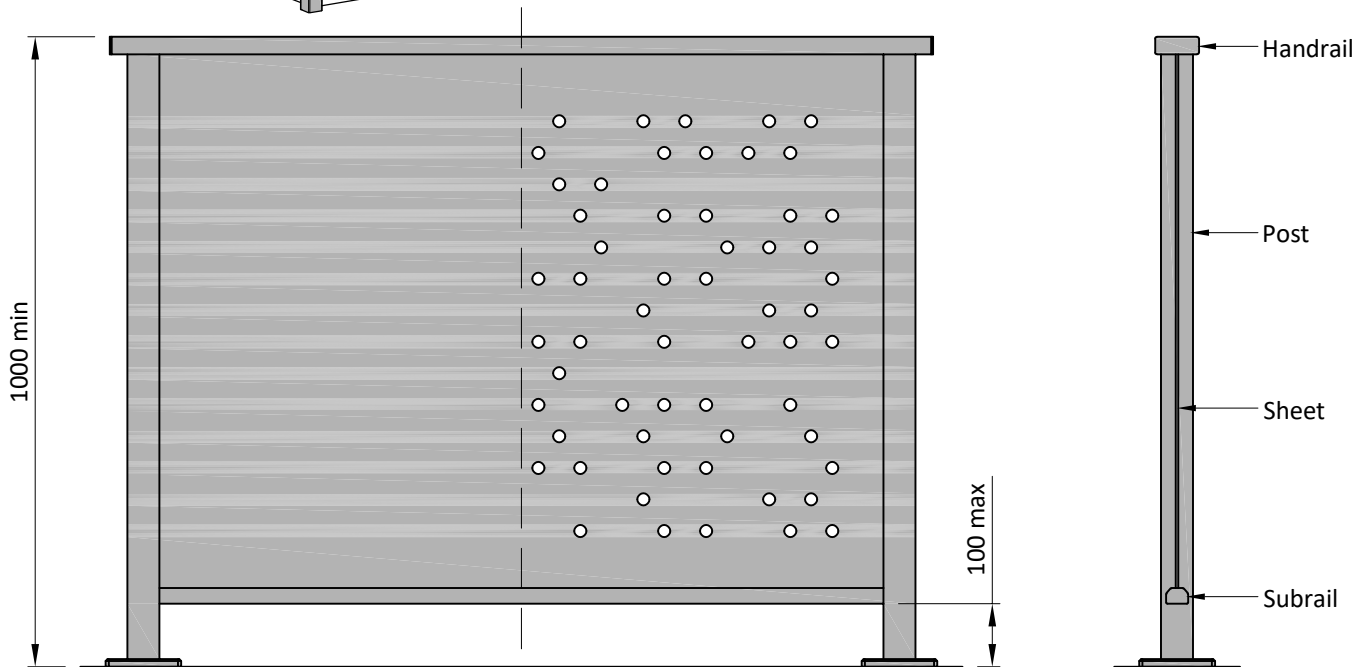


# Clearspan Ali Sheet

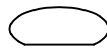
Clearspan Ali sheet balustrade utilises either solid or perforated 4mm aluminium sheet fitted into the clearspan frame. This is a simple & effective way to provide privacy, protection and the aesthetic look from a sheet infill.



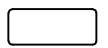
Available in either SOLID or PERFORATED panel options



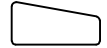
## HANDRAIL TYPES



ELLIPTICAL



RECTANGULAR



SLOPING



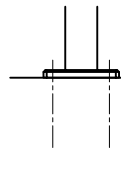
TOP CAP



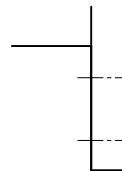
OFFSET

Top Cap and offset are access route compliant. Offset to be used in conjunction with Elliptical, Rectangular or Sloping

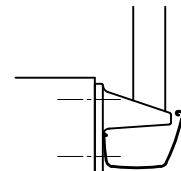
**FIXING OPTIONS** - Available in a range of fixing options/substrates. For a specific fixing detail and post spans to suit your requirements please visit [spectrum.co.nz](http://spectrum.co.nz)



TOP  
FIXED



FACE  
FIXED



CASTAWAY  
BRACKET

- **SURFACE FINISH** - Powdercoated (Dulux Duralloy or Duratec range) or Anodised
- **MATERIALS** - 6060 T5/T6 aluminium - 316 Stainless steel
- **NZBC COMPLIANCE** - B1 (Structure), B2 (Durability), D1 (Access routes), F4 (Safety from falling), F9 (Pool fencing)
- **OCCUPANCY TYPES** - A, B, E & C3
- **INSTALLATION** - Spectrum Balustrade Systems to be fully installed by accredited installers